



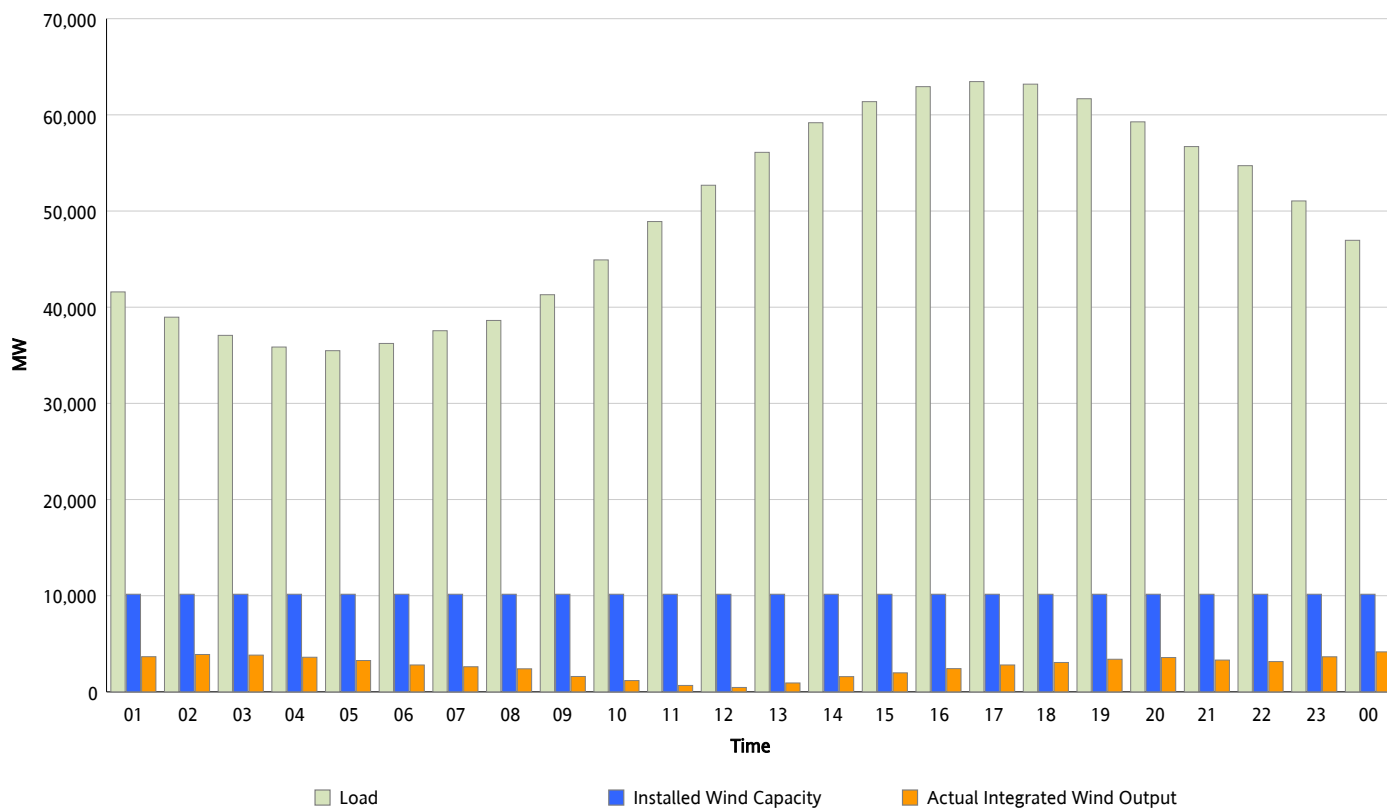
## ERCOT Grid Operations

### Wind Integration Report : 07/12/2013

Peak Load	63,458 MW
Load Peak Hour (HE)	17
Wind Over Peak	2,798 MW
Wind Record 05/02/13	9,674 MW
Max Wind Value*	4,530 MW
Wind Peak Time	23:56
Wind Integration %	10.03 %

#### Hourly Average Actual Load vs. Actual Wind Output

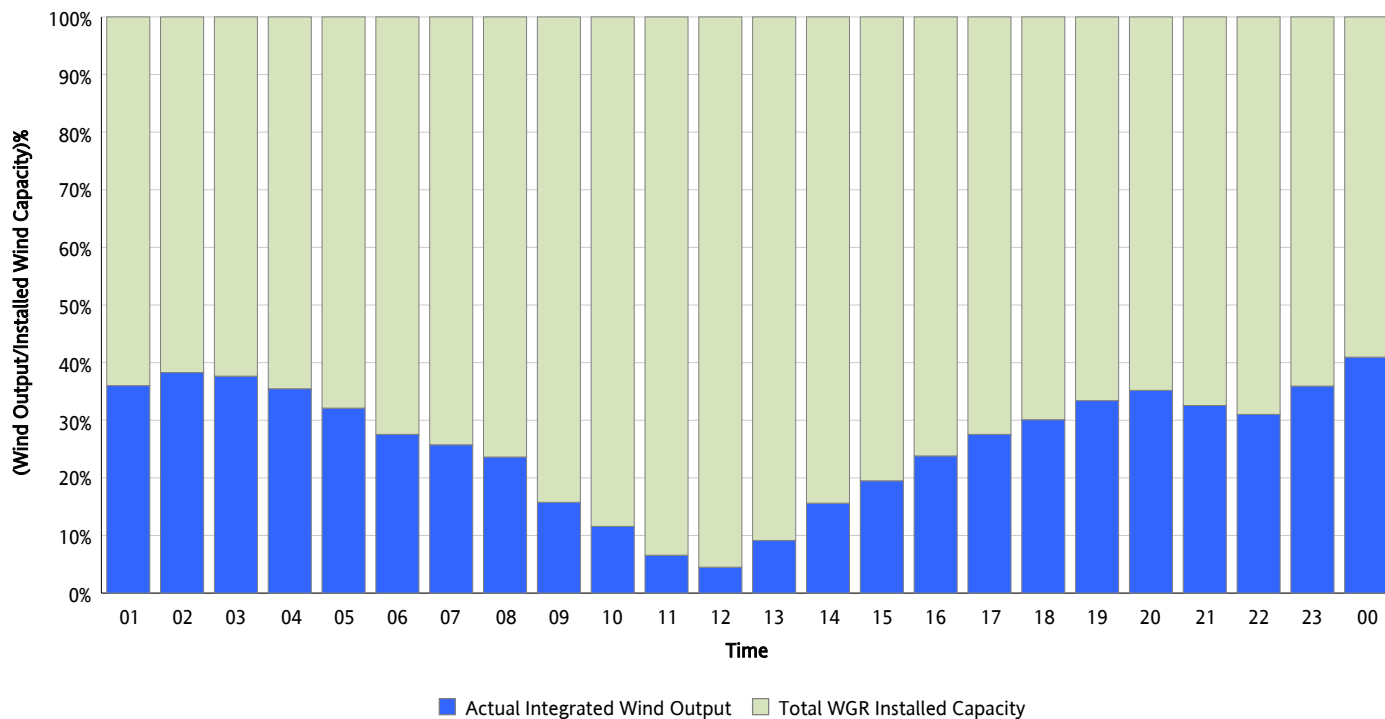
07/12/2013



\* Wind Record and Wind Max represent instantaneous values and the rest of the values are integrated over the hour

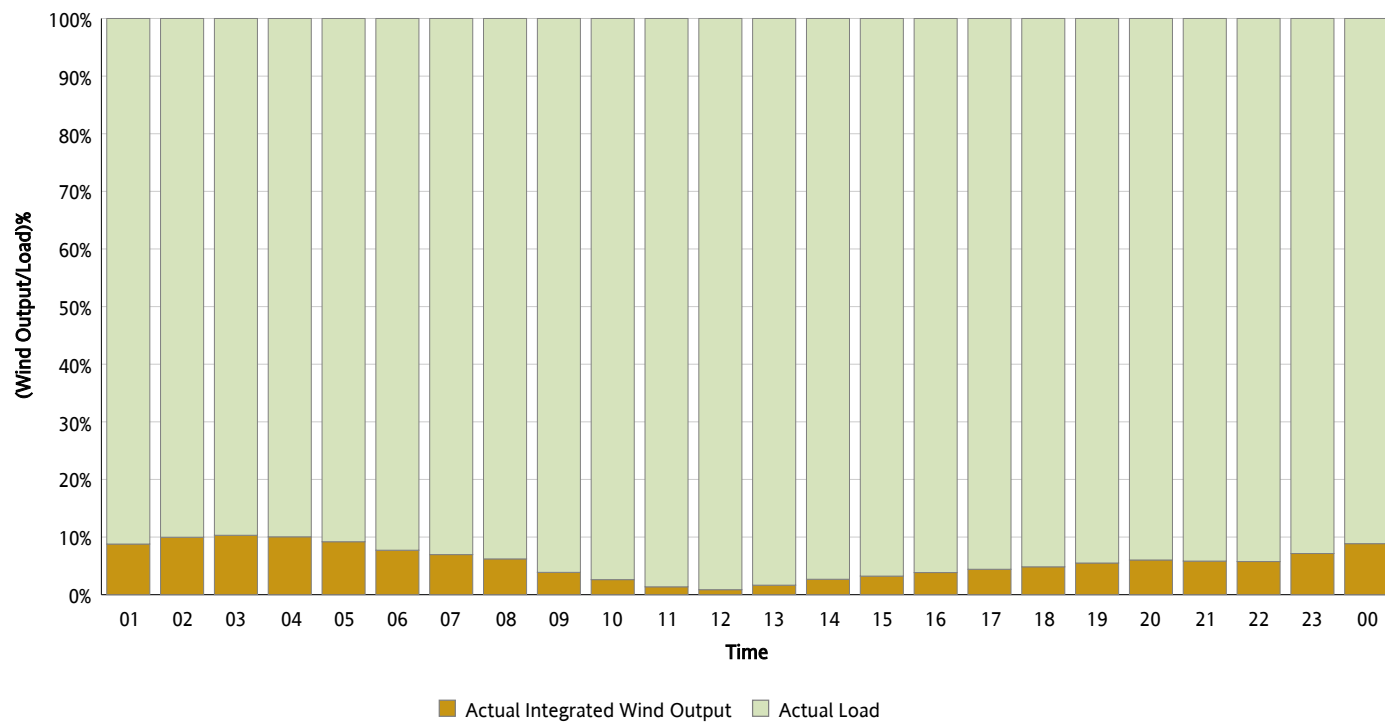
## Actual Wind Output as a Percentage of the Total Installed Wind Capacity

07/12/2013



## Actual Wind Output as a Percentage of the ERCOT Load

07/12/2013



## ERCOT Load vs. Actual Wind Output

07/05/2013 - 07/12/2013

